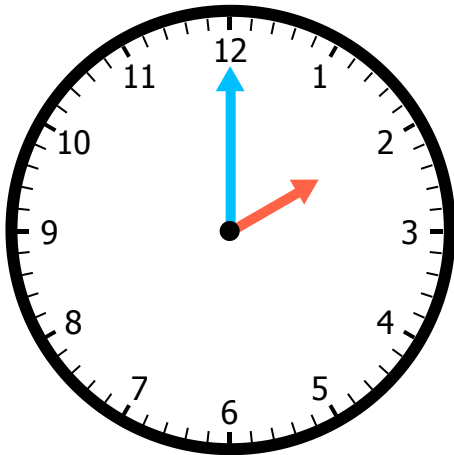


A.

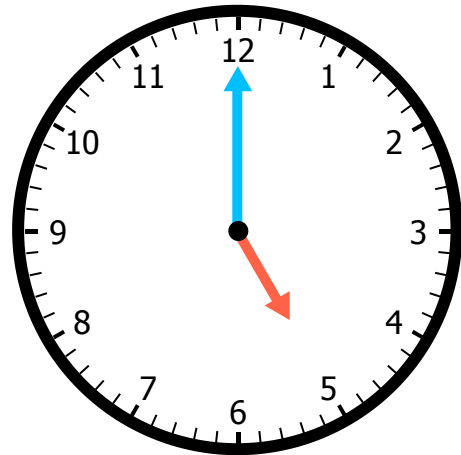


Hour hand is pointing at: \_\_\_\_\_

Minutes after the hour: \_\_\_\_\_

What time is it? \_\_\_\_\_

B.

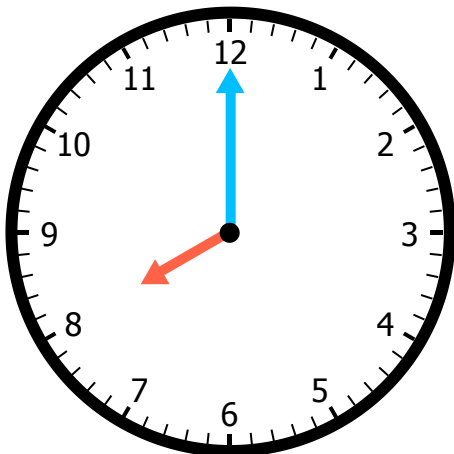


Hour hand is pointing at: \_\_\_\_\_

Minutes after the hour: \_\_\_\_\_

What time is it? \_\_\_\_\_

C.

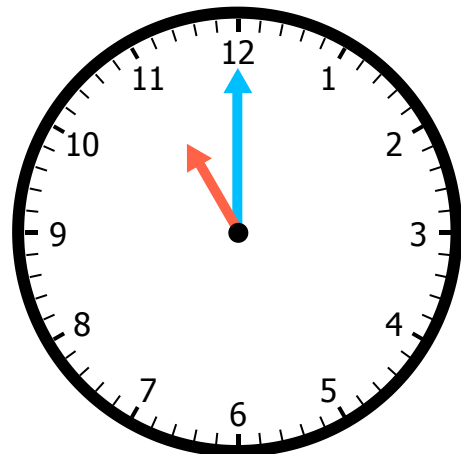


Hour hand is pointing at: \_\_\_\_\_

Minutes after the hour: \_\_\_\_\_

What time is it? \_\_\_\_\_

D.

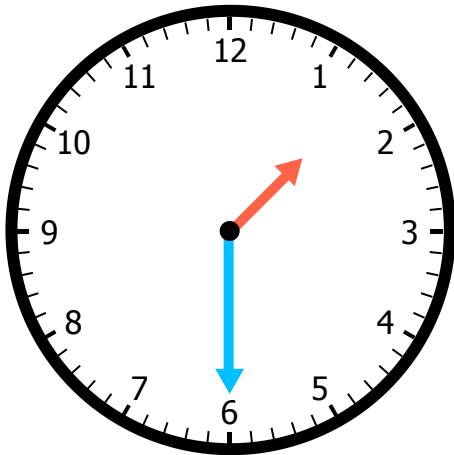


Hour hand is pointing at: \_\_\_\_\_

Minutes after the hour: \_\_\_\_\_

What time is it? \_\_\_\_\_

A.

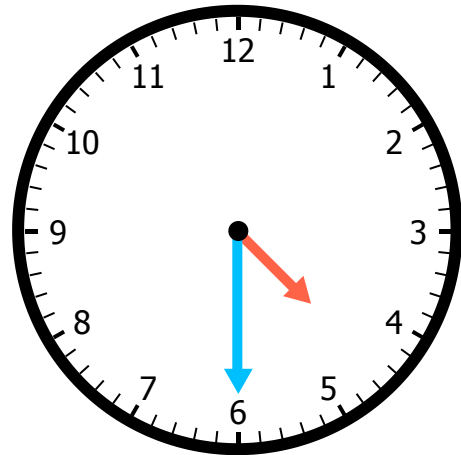


Hour hand is between: \_\_\_\_\_ &amp; \_\_\_\_\_

Minutes after the hour: \_\_\_\_\_

What time is it? \_\_\_\_\_

B.

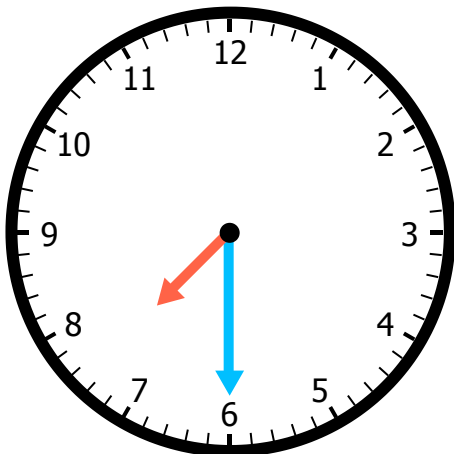


Hour hand is between: \_\_\_\_\_ &amp; \_\_\_\_\_

Minutes after the hour: \_\_\_\_\_

What time is it? \_\_\_\_\_

C.

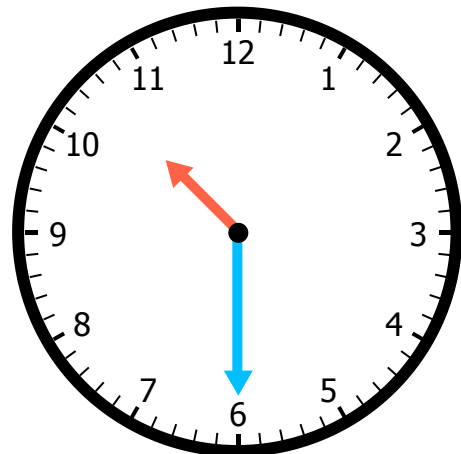


Hour hand is between: \_\_\_\_\_ &amp; \_\_\_\_\_

Minutes after the hour: \_\_\_\_\_

What time is it? \_\_\_\_\_

D.

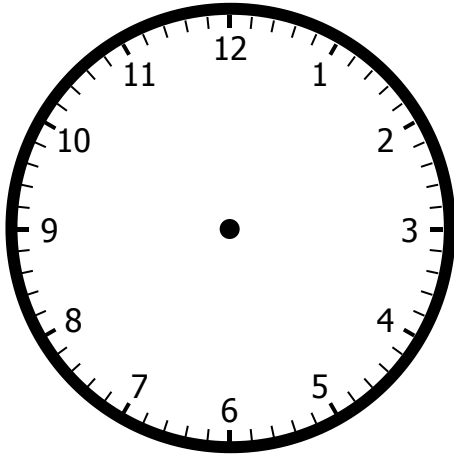


Hour hand is between: \_\_\_\_\_ &amp; \_\_\_\_\_

Minutes after the hour: \_\_\_\_\_

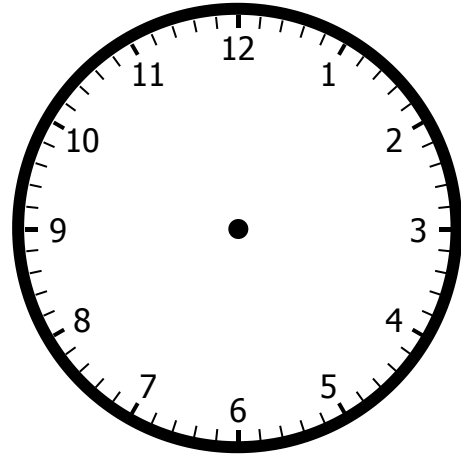
What time is it? \_\_\_\_\_

A.



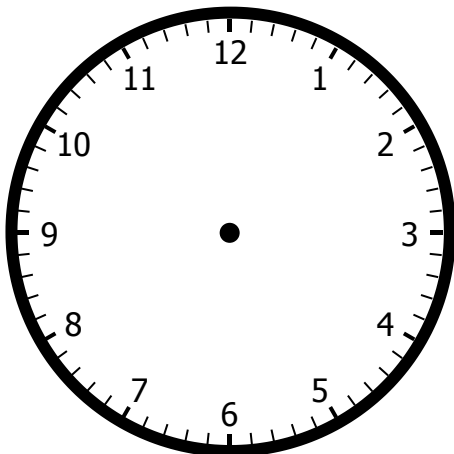
Draw hands on the clock to show 12:00.

B.



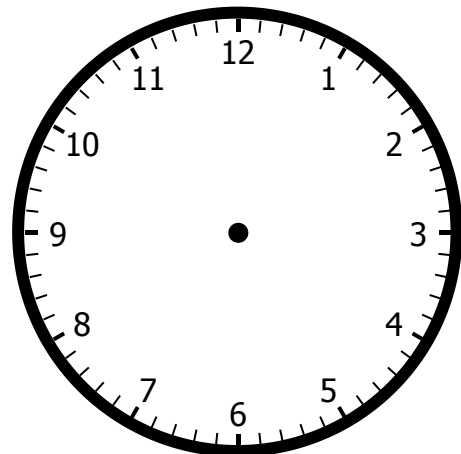
Draw hands on the clock to show 3:00.

C.



Draw hands on the clock to show 6:00.

D.



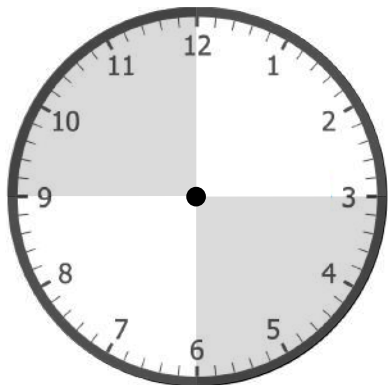
Draw hands on the clock to show 9:00.

Name: \_\_\_\_\_

Problem of the Day Lesson 132

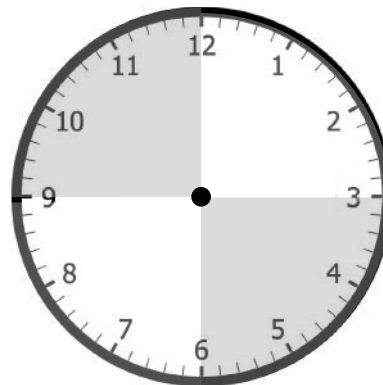
Draw the hour and minute hands. Show your thinking with a digital clock.

a. 30 minutes after 8:00



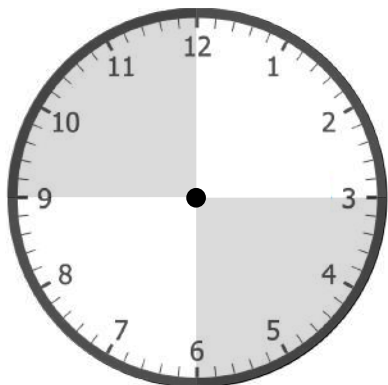
⌚

b. 60 minutes after 8:30



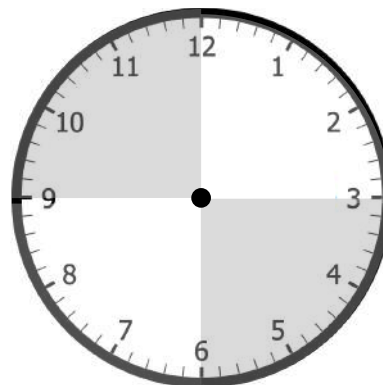
⌚

c. 30 minutes after 9:30



⌚

d. 60 minutes after 10:00



⌚

Name: \_\_\_\_\_

# MATCH TIME - D

Draw lines to connect each clock on the left with the matching time on the right.



10:30



2:00



3:30



9:00



6:00

